



File Creat Date:16/10/02 10:42:08

GSP-6 Data Report

Device Information

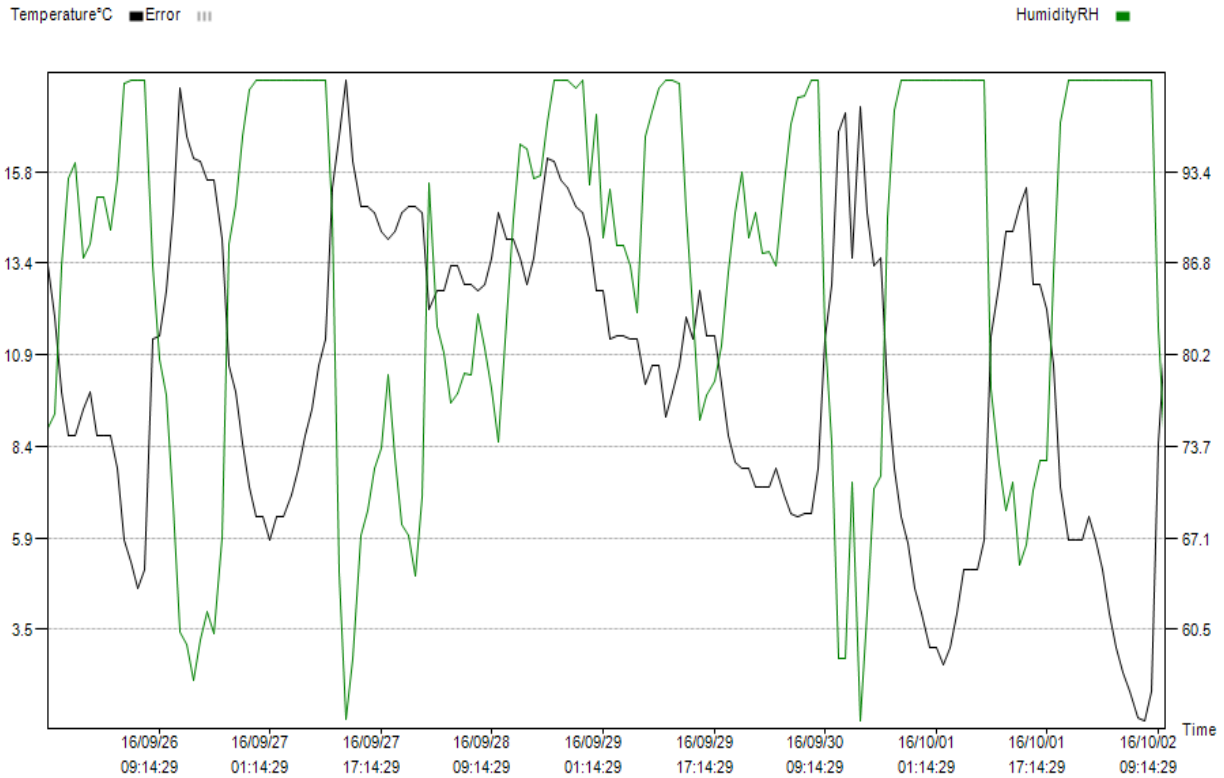
Log Interval: 1H 0M 0S	Start Delay: 0.0	Start Time: 16/09/25 17:14:29
Total Space: 16000	Stop Allow: Disable	Expected Stop Time: 18/07/24 08:14:29
Temperature Type:°C	Alarm Setting: Disable	Actual Stop Time: 16/10/02 10:14:29
Voice Set:Disable	Record Mode: Max	GSP: Disable

Trip Information

Serial Number: 004
 Userinfo: GSP-6 temperature & humidity Data Logger

Logging Summary

Upper Limit: 60.0°C	Upper Limit: 90.0%RH	Recorded Count: 162
Lower Limit: -30.0°C	Lower Limit: 10.0%RH	First time: 16/09/25 17:14:29
Highest: 18.3°C	Highest: 100.0%RH	Last time: 16/10/02 10:14:29
Lowest: 1.0°C	Lowest: 53.9%RH	
Average: 10.4°C	Average: 86.6%RH	



Time	°C	RH	Time	°C	RH	Time	°C	RH	Time	°C	RH	Time	°C	RH
16/09/25	13.3	75	21:14:29	7.8	93.4									
18:14:29	11.9	76	22:14:29	7.8	88.7									
19:14:29	9.9	86.7	23:14:29	7.3	90.5									
20:14:29	8.7	92.9	16/09/30	7.3	87.6									
21:14:29	8.7	94	01:14:29	7.3	87.7									
22:14:29	9.4	87.2	02:14:29	7.8	86.7									
23:14:29	9.9	88.2	03:14:29	7.1	92.5									
16/09/26	8.7	91.6	04:14:29	6.6	96.8									
01:14:29	8.7	91.6	05:14:29	6.5	98.8									
02:14:29	8.7	89.2	06:14:29	6.6	98.9									
03:14:29	7.8	92.9	07:14:29	6.6	100									
04:14:29	5.9	99.8	08:14:29	7.8	100									
05:14:29	5.3	100	09:14:29	11.3	81.8									
06:14:29	4.6	100	10:14:29	12.8	73.9									
07:14:29	5.1	100	11:14:29	16.9	58.4									
08:14:29	11.3	86.6	12:14:29	17.4	58.4									
09:14:29	11.4	79.9	13:14:29	13.5	71.1									
10:14:29	12.6	77.3	14:14:29	17.6	53.9									
11:14:29	14.7	69.5	15:14:29	14.7	61.8									
12:14:29	18.1	60.3	16:14:29	13.3	70.6									
13:14:29	16.8	59.4	17:14:29	13.5	71.5									
14:14:29	16.2	56.8	18:14:29	9.9	90.1									
15:14:29	16.1	59.7	19:14:29	7.8	97.9									
16:14:29	15.6	61.8	20:14:29	6.5	100									
17:14:29	15.6	60.2	21:14:29	5.8	100									
18:14:29	14	67.1	22:14:29	4.6	100									
19:14:29	10.6	88.2	23:14:29	3.9	100									
20:14:29	9.9	91	16/10/01	3	100									
21:14:29	8.5	95.9	01:14:29	3	100									
22:14:29	7.3	99.3	02:14:29	2.5	100									
23:14:29	6.5	100	03:14:29	3	100									
16/09/27	6.5	100	04:14:29	3.9	100									
01:14:29	5.9	100	05:14:29	5.1	100									
02:14:29	6.5	100	06:14:29	5.1	100									
03:14:29	6.5	100	07:14:29	5.1	100									
04:14:29	7.1	100	08:14:29	5.9	100									
05:14:29	7.8	100	09:14:29	11.4	77.8									
06:14:29	8.7	100	10:14:29	12.8	72.4									
07:14:29	9.4	100	11:14:29	14.2	69.1									
08:14:29	10.6	100	12:14:29	14.2	71.1									
09:14:29	11.3	100	13:14:29	14.9	65.1									
10:14:29	15.4	90	14:14:29	15.4	66.6									
11:14:29	16.8	64.6	15:14:29	12.8	70.5									
12:14:29	18.3	54	16:14:29	12.8	72.6									
13:14:29	16.1	58.4	17:14:29	12.1	72.6									
14:14:29	14.9	67.2	18:14:29	10.6	86.1									
15:14:29	14.9	69	19:14:29	7.3	97									
16:14:29	14.7	72.1	20:14:29	5.9	100									
17:14:29	14.2	73.5	21:14:29	5.9	100									
18:14:29	14	78.8	22:14:29	5.9	100									
19:14:29	14.2	72.9	23:14:29	6.5	100									
20:14:29	14.7	68	16/10/02	5.9	100									
21:14:29	14.9	67.2	01:14:29	5.1	100									
22:14:29	14.9	64.3	02:14:29	3.9	100									
23:14:29	14.7	70	03:14:29	3	100									
16/09/28	12.1	92.6	04:14:29	2.3	100									
01:14:29	12.6	82.3	05:14:29	1.8	100									
02:14:29	12.6	80.4	06:14:29	1.1	100									
03:14:29	13.3	76.8	07:14:29	1	100									
04:14:29	13.3	77.4	08:14:29	1.8	100									
05:14:29	12.8	78.9	09:14:29	8.5	82.2									
06:14:29	12.8	78.8	10:14:29	11.3	73									
07:14:29	12.6	83.2												
08:14:29	12.8	80.7												
09:14:29	13.5	77.8												
10:14:29	14.7	74												
11:14:29	14	82.7												
12:14:29	14	90												
13:14:29	13.5	95.4												
14:14:29	12.8	95												
15:14:29	13.5	92.9												
16:14:29	14.9	93.1												
17:14:29	16.2	97												
18:14:29	16.1	100												
19:14:29	15.6	100												
20:14:29	15.4	100												
21:14:29	14.9	99.4												
22:14:29	14.7	100												
23:14:29	14	92.5												
16/09/29	12.6	97.5												
01:14:29	12.6	88.7												
02:14:29	11.3	92.1												
03:14:29	11.4	88.1												
04:14:29	11.4	88.1												
05:14:29	11.3	86.7												
06:14:29	11.3	83.3												
07:14:29	10.1	96												
08:14:29	10.6	97.8												
09:14:29	10.6	99.4												
10:14:29	9.2	100												
11:14:29	9.9	100												
12:14:29	10.6	99.8												
13:14:29	11.9	90.6												
14:14:29	11.3	83.3												
15:14:29	12.6	75.5												
16:14:29	11.4	77.3												
17:14:29	11.4	78.3												
18:14:29	10.1	80.9												
19:14:29	8.7	86.2												
20:14:29	8	90.5												